



AIRWAYS HOTEL

PORT MORESBY

bliss
THE SPA

ESSENTIAL COLLECTIONS

Waxing for her

Half Leg/ Full Arm K85

Full Leg K150

Eye Brow K45

Lip/Chin K40

Underarm K45

Half Arm K55

Bikini Line K65

Bikini K110

Waxing for him

Chest K60

Back K90

Threading

Eye Brow K55

Lip/Chin K50

SIGNATURE COLLECTIONS

Harmonious Lavish 180-minutes K530

Float away in the sea of bliss as we offer you this lavish and calming treatment. Your journey to relaxation begins with a 90mins Swedish massage to balance a tired mind and body, followed by our Timeless Beauty Facial with high content of seaweed extract to preserve the skins natural collagen with powerful anti ageing properties that repair damaged skin cells. Then unwind in a hot bath infused with mineral sea salts.

Exemplary Luxurious 180-minutes K480

The joy of having glowing, smooth, soft and supple skin combined with a feeling of relaxation will put a smile on your face. This luxurious treatment helps remove toxins as you relax. Starting with a full body exfoliation under our trendy vichy shower after which you'll feel totally weightless with our detox body wrap designed to eliminate toxins, reduce cellulites and improve skin tone and texture. It will be followed by an hour of utterly relaxing full body Swedish massage and culminate with Healthy Glow facial that's designed to revitalize and repair even to brighten dull and tired skin.

Ultimate Indulgence 240-minutes K680

An ultimate unwinding experience from head to toe that melts your tension, your body nourished and your skin hydrated. It begins with an invigorating full body exfoliation that leaves the skin nourished and glowing, followed by a cocoon of nourishing gel mask that soothes and hydrates even the driest sensitive skin. Continue to indulge in an hour of muscle melting full body Swedish massage and a Healthy Glow Facial. Lastly, enhance the look of your nails with an express manicure and express pedicure.

MASSAGE COLLECTIONS

Swedish

A combination of Eastern and Western massage techniques to reduce muscle tension and revive the body with positive energy. This traditional massage uses gentle pressure with long flowing movements for total relaxation.

60mins K159

90mins K199

120mins K289

Poultice or Hot Stone

A rebalancing, light massage using either heated sea salt and seaweed granule filled poultices or basalt stones to relax the muscles and release the tension.

Combined with the human touch through massage, you will experience relaxation & healing at the deepest level. Aside from relieving stress and tension, it also assists in circulation and lymph flow.

60mins K180

90mins K220

Foot Reflexology

A therapeutically effective massage for the feet. Stimulating reflex points of the feet which corresponds to every organ and gland in the body.

60mins K140

90mins K199

Deep Tissue

It uses firm pressure and slow strokes to reach deeper layers of muscle and fascia (connective tissue surrounding the muscles).

60mins K180

90mins K220

Sports

A popular form of treatment for soft tissue injuries focusing on areas of the body that are overused and stressed from repetitive and often aggressive movements.

60mins K180

90mins K220

Thai Traditional

A dry acupressure massage combined with gentle yoga stretching techniques to loosen blockage & improve flexibility. This treatment will truly reawaken the body's energy flow and facilitate reconnection of body, mind and soul.

60mins K180

90mins K220

FACIAL COLLECTIONS

ishga Healthy Glow 60-minutes K220

A rejuvenating facial designed to revitalize and repair, suitable for all skin type even sensitive skin. It is particularly useful for brightening dull, tired skin and balances skin tone and texture. This treatment will cleanse, tone, exfoliate and moisture the skin leaving it revitalized and hydrated.

ishga Timeless Beauty 60-minutes K240

Using a rich Marine Cleansing Balm packed with hydrating fatty acids and a lifting and firming gel face and eye mask to tighten and tone the skin. The high content of seaweed extract in the products used is proven to preserve the skins natural collagen, with powerful anti ageing properties that repair damaged skin cells which results in smoothing fine lines and wrinkles

ishga Skinpeccable 90-minutes K300

An indulgent, luxurious facial which incorporates a thorough skin care routine combined with three intensive masks. Including a deep exfoliation using a rich, vitamin packed sea kelp powder which will remove dead skin to leave the skin bright and glowing. This facial includes a warming massage of the face, scalp, shoulders and arms using heated sea salt and seaweed poultice which will absorb congestion and detoxify the skin, adding a host of vitamins and minerals into the face and upper body.

ishga Men's Facial 60-minutes K190

The ishga men's products are designed to detox and draw impurities from the skin whilst stimulating collagen production and combat signs of ageing. It calms irritation and super boosting for tired, stressed and dehydrated skin. This treatment will cleanse, tone and moisturize the skin leaving it revitalized and hydrated leaving protective layer to prevent environmental damage.

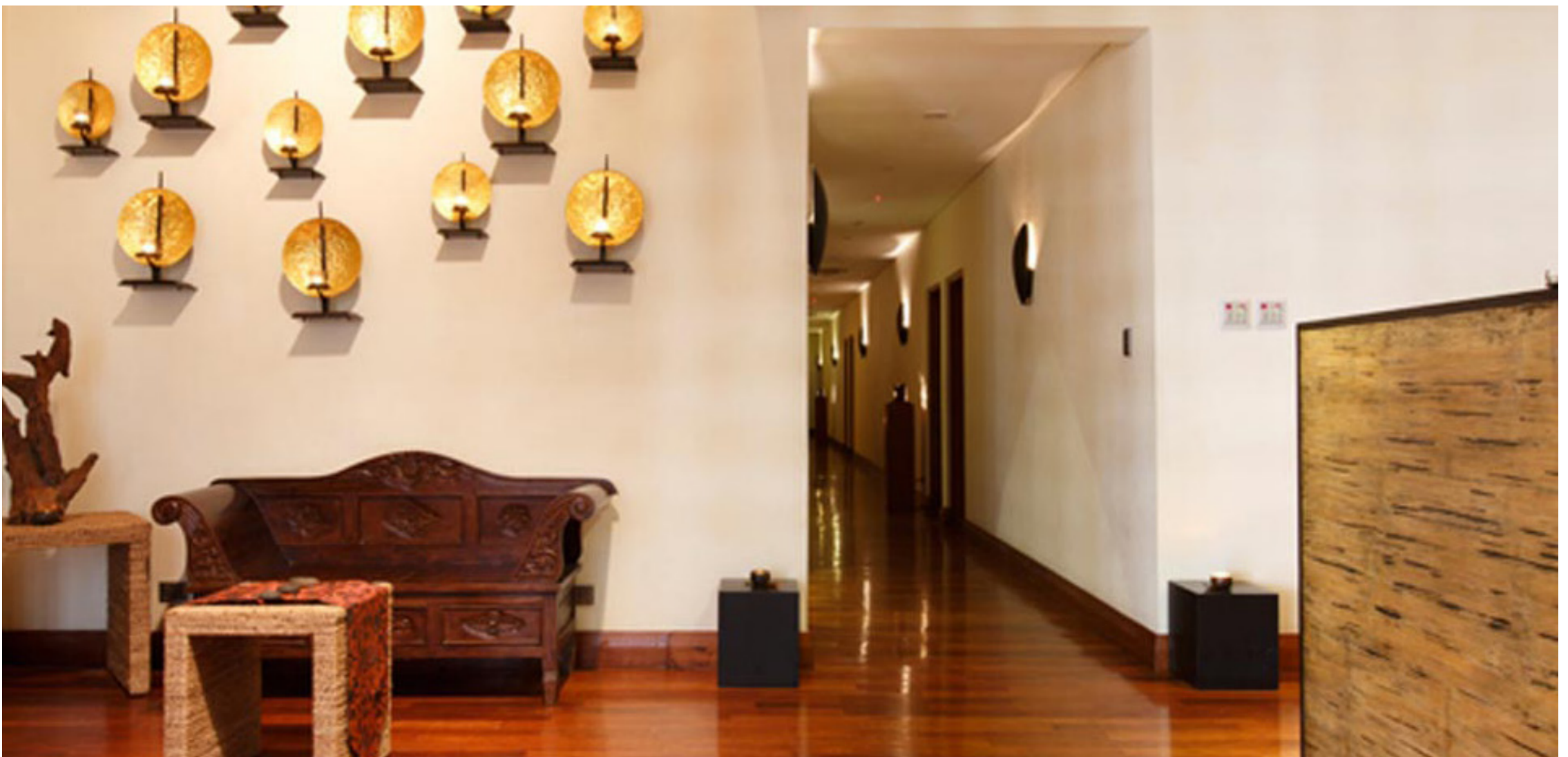
BODY TREATMENTS

Detox Body Wrap 60-minutes K150

This treatment is designed to eliminate toxins, reduce cellulite, boost energy and improve skin tone and texture and detoxifying congestion from the body. This combines the detoxifying and nourishing effect of the purest seaweed gel and hydrating properties of the scrub.

Nourishing Body Wrap 60-minutes K240

Combining a hydrating salt scrub to remove dull, tired skin followed by a cocoon of a nourishing gel body mask which soothes, cool, hydrates and tones even the driest, sensitive skin. A wonderful scalp massage completes the experience.



NAIL COLLECTIONS

Pure Bliss Hand Ritual 60-minutes K99

A standard yet definitive manicure experience comprises of nail trimming, filing & shaping, cuticle work, relaxing hand and lower arm massage, paraffin hand bath. Finish off with application of nail polish.

Pure Bliss Foot Ritual 60-minutes K115

A standard but perfect pedicure experience includes foot bath, moisturizing exfoliation, nail trimming, filing & shaping, cuticle work, relaxing foot and lower leg massage, paraffin foot bath. Application of nail polish to give absolute & exclusive pedicure.

Gel Manicure 60-minutes K160

A standard yet definitive manicure experience comprises of nail trimming, filing & shaping, cuticle work. It uses a gel base polish and uses LED lights to cure the polish and lock it into your nails.

Gel Pedicure 60-minutes K170

A standard but perfect pedicure experience includes foot bath, moisturizing exfoliation, nail trimming, filing & shaping, cuticle work. It uses a gel base polish and uses LED lights to cure the polish and lock it into your nails. A short but relaxing foot massage will complete your pedicure.

MEMBERSHIP

12-Month Membership

Membership Fee: K3,999.00

Inclusions:

- 4 vouchers for 90mins massage of choice
- 6 vouchers for 60mins massage of choice
- 1 voucher for 60mins facial of choice
- 1 voucher for overnight stay at Bacchus Room with buffet breakfast for 2 persons (excluding beverages)
- 6 free gym visits

Privileges of 12-Month Membership

- 25% discount on all spa treatments
- 10% discount for all accompanying guests
- 5% discount on spa retail
- 15% discount on gift certificate purchases
- 10% discount on hotel accommodation (at best available rate)
- 10% on Food & Beverage dining (except alcohol)

6-Month Membership

Membership Fee: K2,250.00

Inclusions:

- 2 vouchers for 90mins massage of choice
- 4 vouchers for 60mins massage of choice
- 1 voucher for 60mins facial of choice
- 3 free gym visits

Privileges of 12-Month Membership

- 20% discount on all spa treatments
- 10% discount for all accompanying guests
- 5% discount on spa retail
- 10% discount on gift certificate purchases
- 10% discount on hotel accommodation (at best available rate)
- 10% on Food & Beverage dining (except alcohol)

Membership Terms & Conditions

- Bliss the Spa membership is non transferable and not valid with any special offers unless otherwise stipulated by the hotel.
- Bliss the Spa membership card must be presented before availing any goods and services.
- Members are required to be at least 18 years old.
- The vouchers are valid for the duration of the membership only.



CANCELLATION POLICY

- * 4 hours advance notice is required for cancellation and rescheduling
- * Reduction of treatment time for late arrivals whilst full treatment fee will apply
- * Please advise your therapist if you are suffering from any medical conditions (i.e. allergies, asthma, back problems, diabetes, loss of sensations, etc.)
- * The Hotel and its employees will not hold any responsibility from any liability, claims or demands

CONTACT

Jacksons Parade, Jacksons International Airport
P.O Box 1942, Boroko NCD, Papua New Guinea
Phone: (675) 324 5200; (675) 7373 2600
Email: bliss-thespa@airways.com.pg
www.airways.com.pg